

PIVO - KOLIČINSKI PRIKAZ 2015.

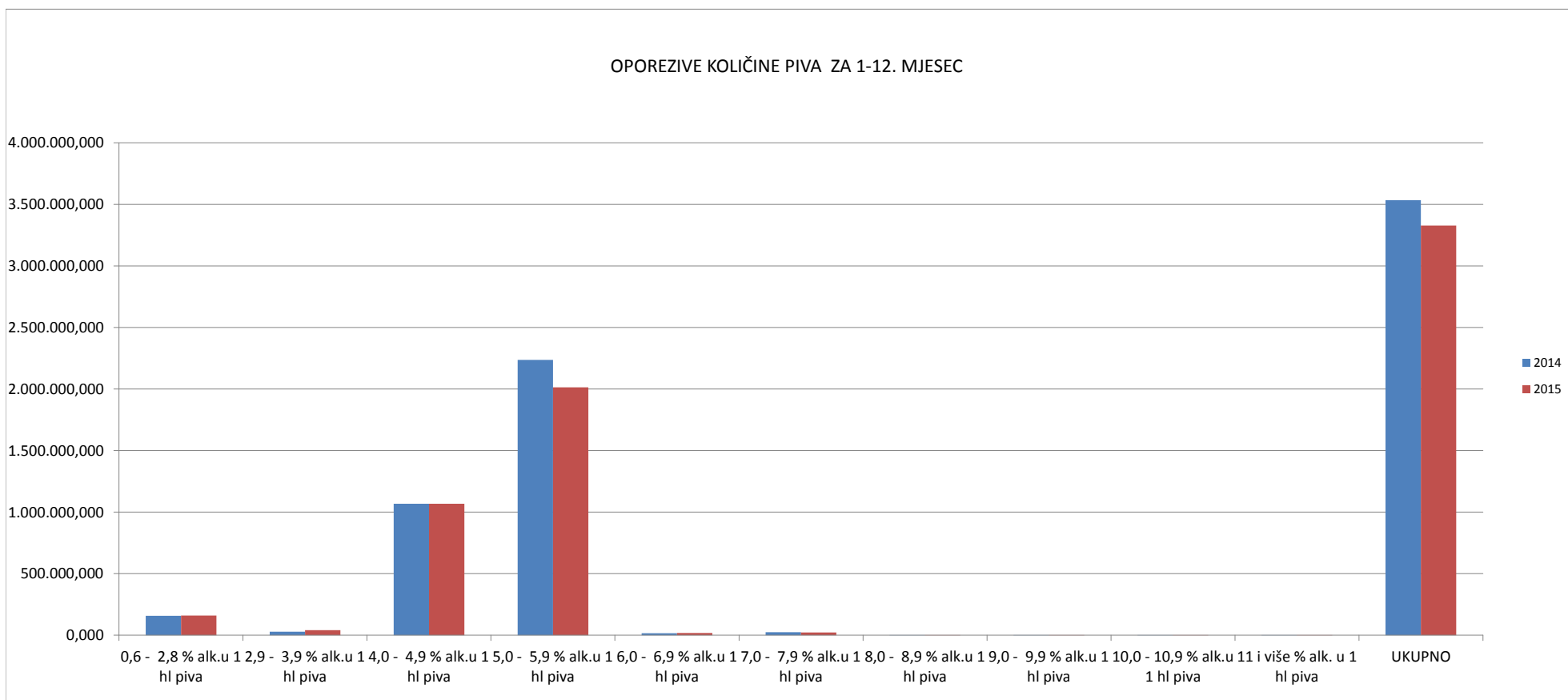
1. Oporezive količine i puštene u potrošnju
2. Uvezene količine i smještene u trošarinski skladište
3. Uvezene količine i puštene u slobodan promet
4. Ukupno uvezene količine
5. Količine primljene iz druge države članice EU
6. Ukupno oporezive količine
7. Količine otpremljene u drugu državu članicu EU
8. Izvezene količine
9. Ukupno neoporezive količine

PIVO**OPOREZIVE KOLIČINE I PUŠTENE U POTROŠNJU U RH**

Količina	0,6 - 2,8 % alk.u 1 hl piva	2,9 - 3,9 % alk.u 1 hl piva	4,0 - 4,9 % alk.u 1 hl piva	5,0 - 5,9 % alk.u 1 hl piva	6,0 - 6,9 % alk.u 1 hl piva	7,0 - 7,9 % alk.u 1 hl piva	8,0 - 8,9 % alk.u 1 hl piva	9,0 - 9,9 % alk.u 1 hl piva	10,0 - 10,9 % alk.u 1 hl piva	11 i više % alk. u 1 hl piva	UKUPNO
Jedinica mjere	hl	hl	hl	hl	hl	hl	hl	hl	hl	hl	hl
2014	157.236,650	29.084,050	1.068.331,790	2.237.630,510	16.580,330	24.670,680	291,250	79,800	85,470	37,030	3.534.027,450
2015	160.331,210	41.084,830	1.068.869,450	2.014.807,280	18.724,900	23.104,990	481,010	82,100	111,110	43,710	3.327.640,170
2015/2014	1,97%	41,26%	0,05%	-9,96%	12,93%	-6,35%	65,15%	2,88%	30,00%	18,04%	-5,84%

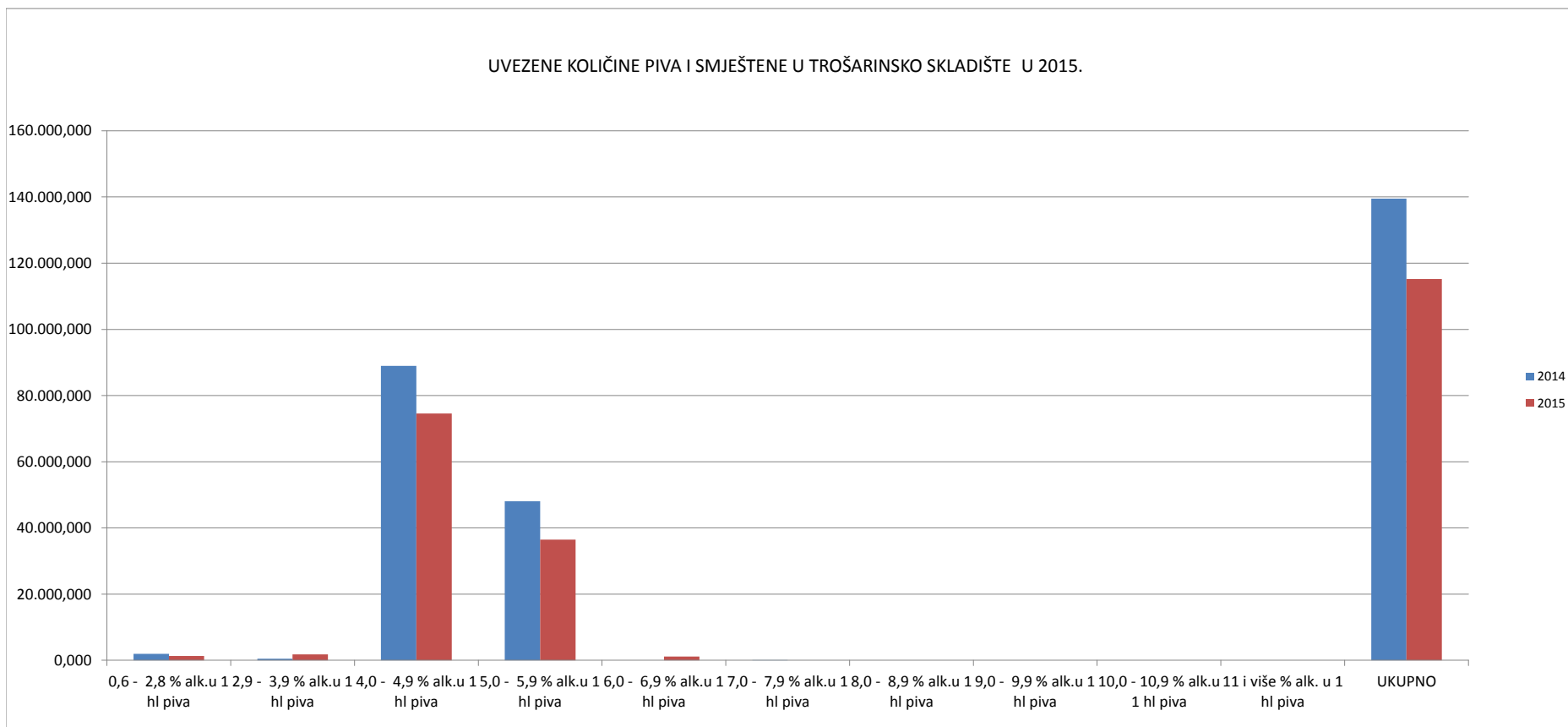
Napomena :

OPOREZIVO I PUŠTENO U POTROŠNJU U RH ukupne količine (proizvedena/uvezena i smještena u trošarinsko skladište) za koje je nastala trošarinska obveza ovlaštenog držatelja trošarinskog skladišta



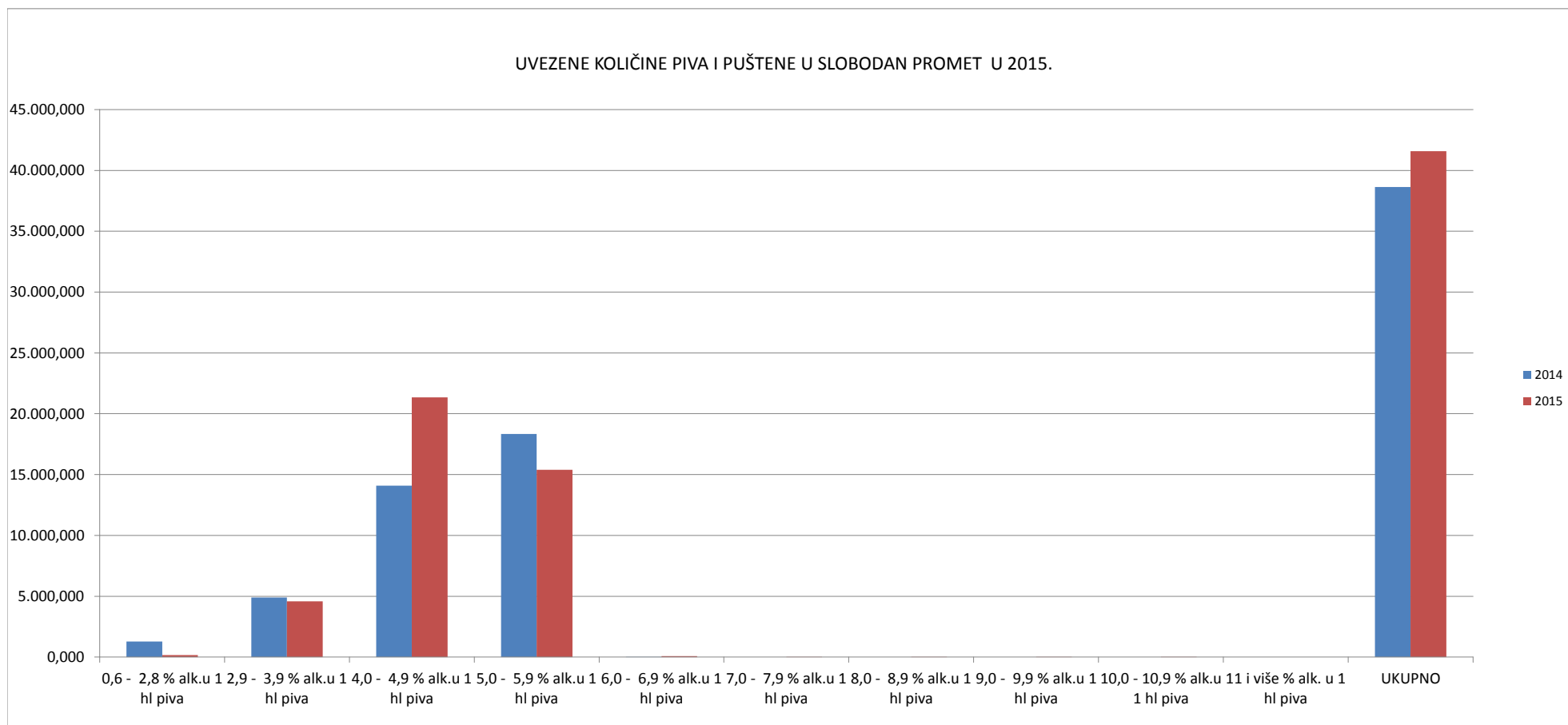
PIVO
KOLIČINE UVEZENE I SMJEŠTENE U TS

Količina	0,6 - 2,8 % alk.u 1 hl piva	2,9 - 3,9 % alk.u 1 hl piva	4,0 - 4,9 % alk.u 1 hl piva	5,0 - 5,9 % alk.u 1 hl piva	6,0 - 6,9 % alk.u 1 hl piva	7,0 - 7,9 % alk.u 1 hl piva	8,0 - 8,9 % alk.u 1 hl piva	9,0 - 9,9 % alk.u 1 hl piva	10,0 - 10,9 % alk.u 1 hl piva	11 i više % alk. u 1 hl piva	UKUPNO
Jedinica mjere	hl	hl	hl	hl	hl	hl	hl	hl	hl	hl	hl
2014	1.970,760	461,160	88.998,550	48.065,270	0,000	1,000	0,000	0,000	0,000	0,000	139.496,760
2015	1.270,680	1.794,840	74.594,880	36.427,660	1.152,600	0,000	0,000	0,000	0,000	0,000	115.240,660
2015/2014	-35,52%	289,20%	-16,18%	-24,21%	100,00%	0,00%	0,00%	0,00%	0,00%	0,00%	-17,39%



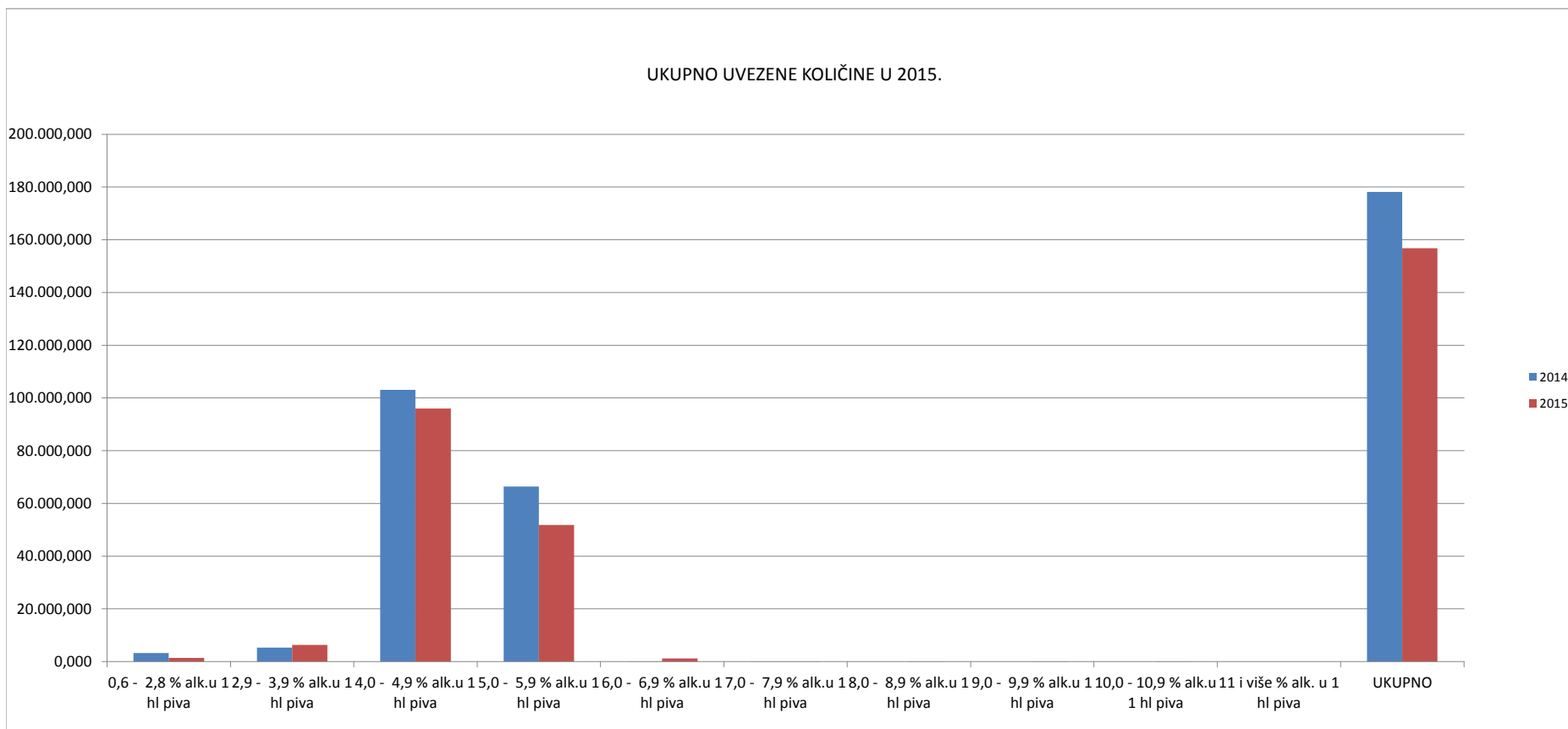
PIVO
KOLIČINE UVEZENE I PUŠTENE U SLOBODAN PROMET

Količina	0,6 - 2,8 % alk.u 1 hl piva	2,9 - 3,9 % alk.u 1 hl piva	4,0 - 4,9 % alk.u 1 hl piva	5,0 - 5,9 % alk.u 1 hl piva	6,0 - 6,9 % alk.u 1 hl piva	7,0 - 7,9 % alk.u 1 hl piva	8,0 - 8,9 % alk.u 1 hl piva	9,0 - 9,9 % alk.u 1 hl piva	10,0 - 10,9 % alk.u 1 hl piva	11 i više % alk. u 1 hl piva	UKUPNO
Jedinica mjere	hl	hl	hl	hl	hl	hl	hl	hl	hl	hl	hl
2014	1.284,800	4.902,120	14.079,520	18.337,700	23,370	0,000	0,000	0,000	0,000	0,000	38.627,500
2015	158,160	4.582,640	21.345,480	15.388,270	77,270	15,950	1,070	6,390	0,090	0,000	41.575,250
2015/2014	-87,69%	-6,52%	51,61%	-16,08%	230,64%	0,00%	100,00%	100,00%	100,00%	0,00%	7,63%



PIVO
UKUPNO UVEZENE KOLIČINE

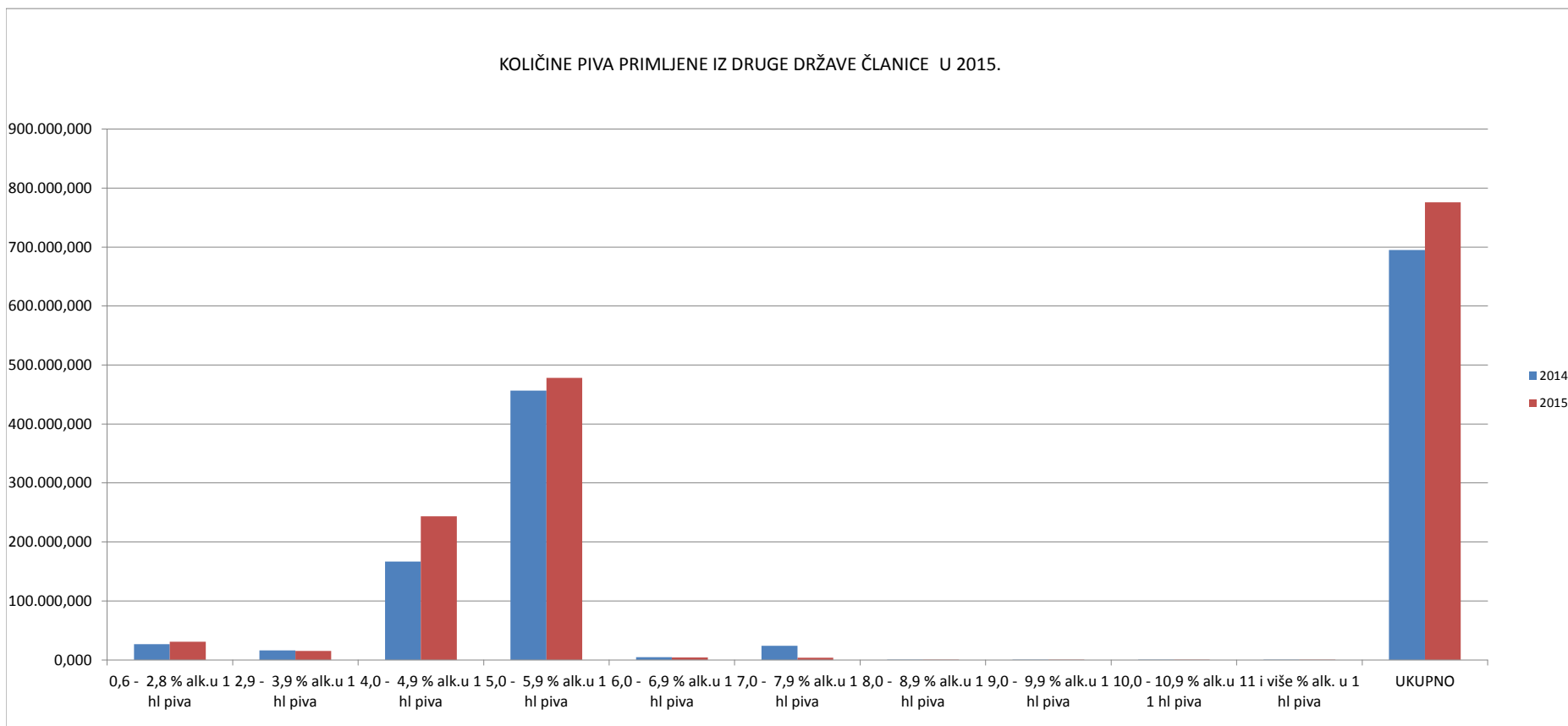
Količina	0,6 - 2,8 % alk.u 1 hl piva	2,9 - 3,9 % alk.u 1 hl piva	4,0 - 4,9 % alk.u 1 hl piva	5,0 - 5,9 % alk.u 1 hl piva	6,0 - 6,9 % alk.u 1 hl piva	7,0 - 7,9 % alk.u 1 hl piva	8,0 - 8,9 % alk.u 1 hl piva	9,0 - 9,9 % alk.u 1 hl piva	10,0 - 10,9 % alk.u 1 hl piva	11 i više % alk. u 1 hl piva	UKUPNO
Jedinica mjere	hl	hl	hl	hl	hl	hl	hl	hl	hl	hl	hl
2014	3.255,560	5.363,280	103.078,070	66.402,950	23,370	1,000	0,000	0,000	0,000	0,000	178.124,250
2015	1.428,840	6.377,480	95.940,370	51.815,930	1.229,870	15,950	1,070	6,390	0,090	0,000	156.815,920
2015/2014	-56,11%	18,91%	-6,92%	-21,97%	5162,60%	1495,00%	100,00%	100,00%	100,00%	0,00%	-11,96%



PIVO

KOLIČINE PRIMLJENE IZ DRUGE DRŽAVE ČLANICE

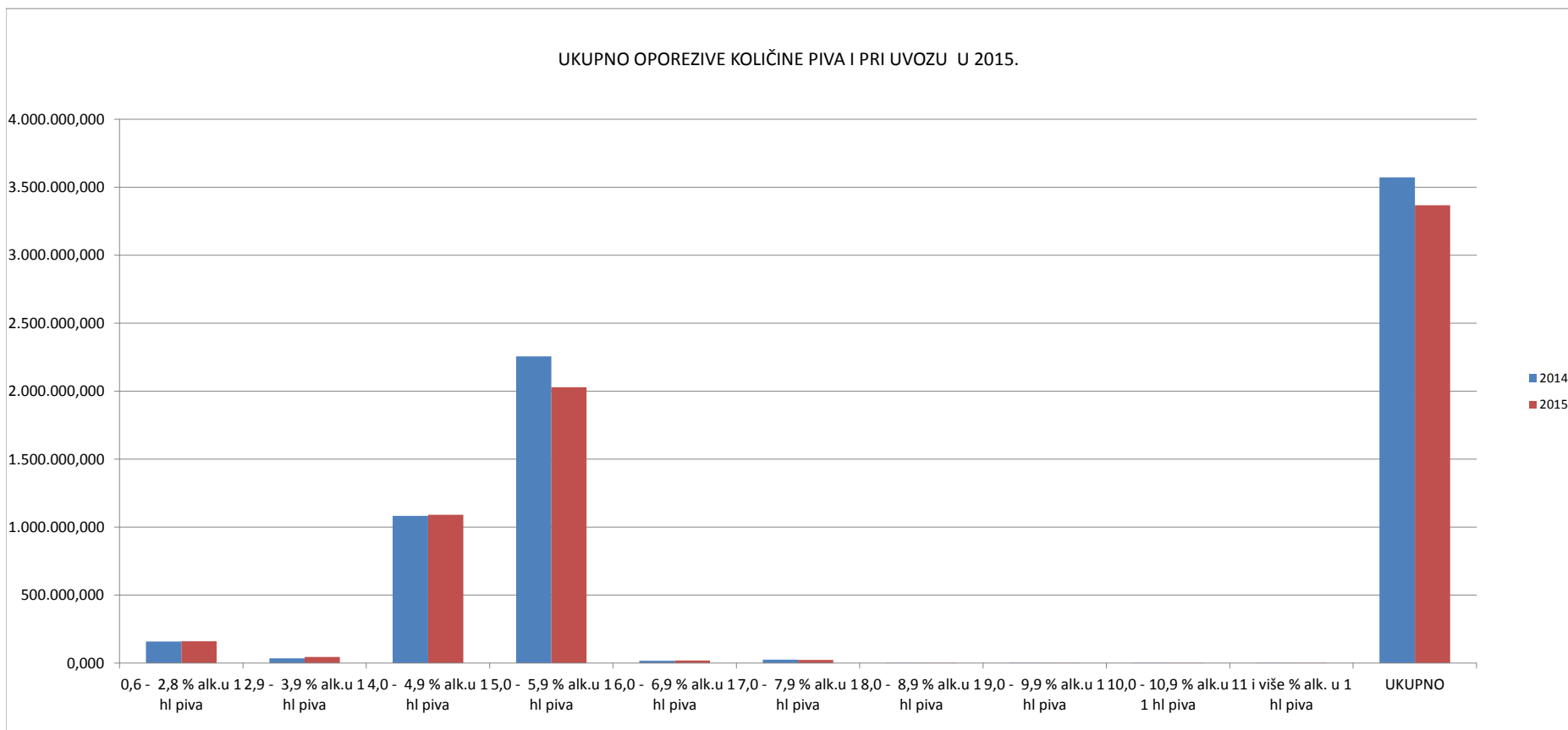
Količina	0,6 - 2,8 % alk.u 1 hl piva	2,9 - 3,9 % alk.u 1 hl piva	4,0 - 4,9 % alk.u 1 hl piva	5,0 - 5,9 % alk.u 1 hl piva	6,0 - 6,9 % alk.u 1 hl piva	7,0 - 7,9 % alk.u 1 hl piva	8,0 - 8,9 % alk.u 1 hl piva	9,0 - 9,9 % alk.u 1 hl piva	10,0 - 10,9 % alk.u 1 hl piva	11 i više % alk. u 1 hl piva	UKUPNO
Jedinica mjere	hl	hl	hl	hl	hl	hl	hl	hl	hl	hl	hl
2014	26.782,250	16.257,050	166.728,180	456.580,150	4.385,440	23.903,750	293,850	66,220	89,450	40,000	695.126,260
2015	30.942,530	15.321,130	243.285,810	478.029,550	4.071,640	3.574,360	497,120	81,350	111,200	43,710	775.958,000
2015/2014	15,53%	-5,76%	45,92%	4,70%	-7,16%	-85,05%	69,17%	22,85%	24,32%	9,28%	11,63%



PIVO

UKUPNO OPOREZIVE KOLIČINE U RH I PRI UVOZU

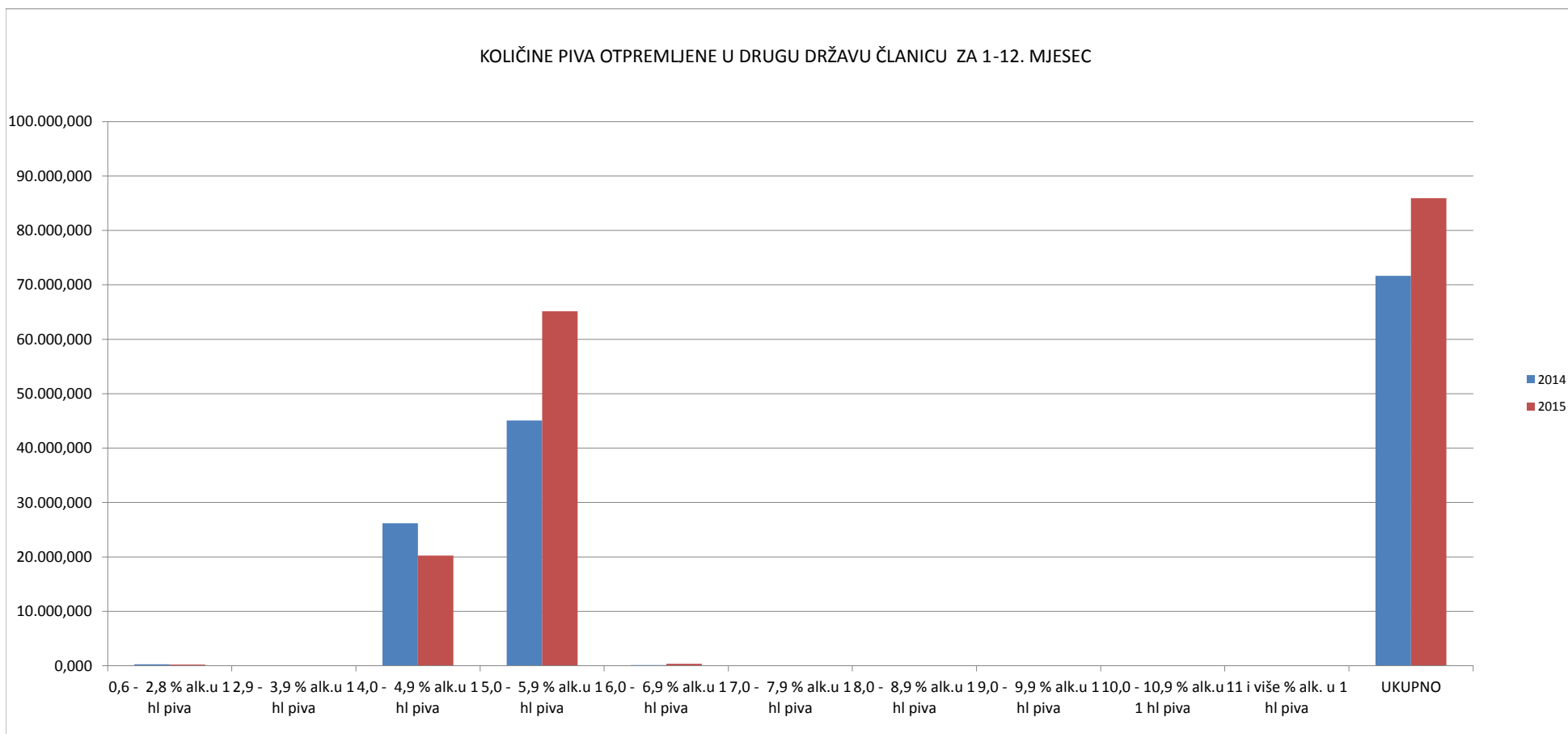
Količina	0,6 - 2,8 % alk.u 1 hl piva	2,9 - 3,9 % alk.u 1 hl piva	4,0 - 4,9 % alk.u 1 hl piva	5,0 - 5,9 % alk.u 1 hl piva	6,0 - 6,9 % alk.u 1 hl piva	7,0 - 7,9 % alk.u 1 hl piva	8,0 - 8,9 % alk.u 1 hl piva	9,0 - 9,9 % alk.u 1 hl piva	10,0 - 10,9 % alk.u 1 hl piva	11 i više % alk. u 1 hl piva	UKUPNO
Jedinica mjere	hl	hl	hl	hl	hl	hl	hl	hl	hl	hl	hl
2014	158.521,450	33.986,170	1.082.411,350	2.255.968,200	16.603,700	24.670,680	291,250	79,800	85,470	37,030	3.572.654,930
2015	160.489,370	45.667,470	1.090.214,920	2.030.195,560	18.802,170	23.120,940	482,080	88,490	111,200	43,710	3.369.215,420
2015/2014	1,24%	34,37%	0,72%	-10,01%	13,24%	-6,28%	65,52%	10,89%	30,10%	18,04%	-5,69%



PIVO

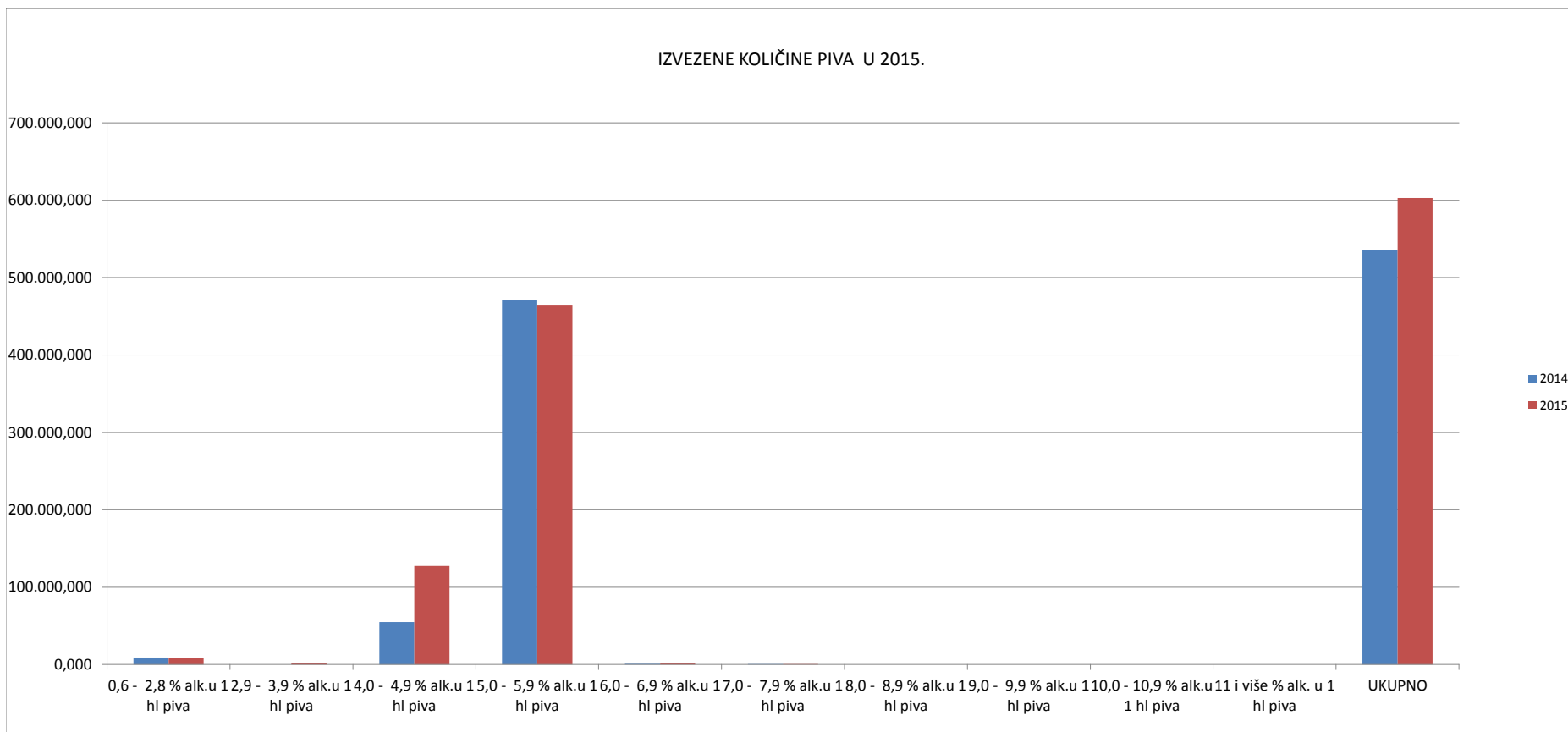
KOLIČINE OTPREMLJENE U DRUGU DRŽAVU ČLANICU

Količina	0,6 - 2,8 % alk.u 1 hl piva	2,9 - 3,9 % alk.u 1 hl piva	4,0 - 4,9 % alk.u 1 hl piva	5,0 - 5,9 % alk.u 1 hl piva	6,0 - 6,9 % alk.u 1 hl piva	7,0 - 7,9 % alk.u 1 hl piva	8,0 - 8,9 % alk.u 1 hl piva	9,0 - 9,9 % alk.u 1 hl piva	10,0 - 10,9 % alk.u 1 hl piva	11 i više % alk. u 1 hl piva	UKUPNO
Jedinica mjere	hl	hl	hl	hl	hl	hl	hl	hl	hl	hl	hl
2014	264,080	0,000	26.178,660	45.083,730	153,970	0,000	0,000	0,000	0,000	0,000	71.680,450
2015	207,780	0,000	20.239,470	65.128,200	357,100	0,000	0,000	0,000	0,000	0,000	85.932,580
2015/2014	-21,32%	0,00%	-22,69%	44,46%	131,93%	0,00%	0,00%	0,00%	0,00%	0,00%	19,88%



PIVO
IZVEZENE KOLIČINE

Količina	0,6 - 2,8 % alk.u 1 hl piva	2,9 - 3,9 % alk.u 1 hl piva	4,0 - 4,9 % alk.u 1 hl piva	5,0 - 5,9 % alk.u 1 hl piva	6,0 - 6,9 % alk.u 1 hl piva	7,0 - 7,9 % alk.u 1 hl piva	8,0 - 8,9 % alk.u 1 hl piva	9,0 - 9,9 % alk.u 1 hl piva	10,0 - 10,9 % alk.u 1 hl piva	11 i više % alk. u 1 hl piva	UKUPNO
Jedinica mjere	hl	hl	hl	hl	hl	hl	hl	hl	hl	hl	hl
2014	9.004,120	0,000	54.876,150	470.507,510	895,640	486,800	0,000	0,000	0,000	0,000	535.770,210
2015	7.897,830	1.858,000	127.205,160	463.739,900	1.365,740	730,000	0,000	0,000	0,000	0,000	602.796,620
2015/2014	-12,29%	0,00%	131,80%	-1,44%	52,49%	49,96%	0,00%	0,00%	0,00%	0,00%	12,51%

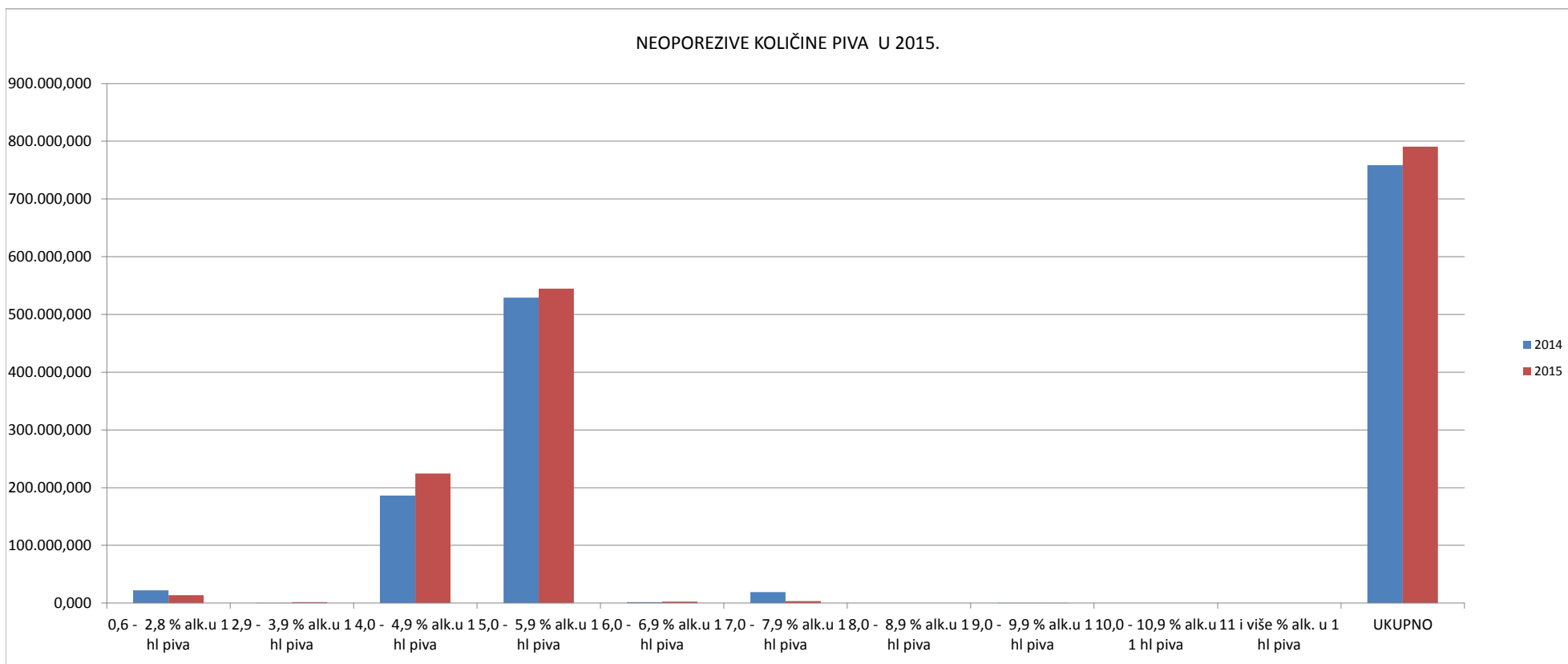


PIVO
NEOPOREZIVE KOLIČINE

Količina	0,6 - 2,8 % alk.u 1 hl piva	2,9 - 3,9 % alk.u 1 hl piva	4,0 - 4,9 % alk.u 1 hl piva	5,0 - 5,9 % alk.u 1 hl piva	6,0 - 6,9 % alk.u 1 hl piva	7,0 - 7,9 % alk.u 1 hl piva	8,0 - 8,9 % alk.u 1 hl piva	9,0 - 9,9 % alk.u 1 hl piva	10,0 - 10,9 % alk.u 1 hl piva	11 i više % alk. u 1 hl piva	UKUPNO
Jedinica mjere	hl	hl	hl	hl	hl	hl	hl	hl	hl	hl	hl
2014	22.210,560	2,690	186.409,140	529.265,750	1.686,350	18.906,510	0,000	2,040	0,000	0,000	758.483,100
2015	13.768,860	1.906,130	224.423,540	544.827,530	2.529,150	3.286,040	0,000	2,040	0,000	0,000	790.743,350
2015/2014	-38,01%	70759,85%	20,39%	2,94%	49,98%	-82,62%	0,00%	0,00%	0,00%	0,00%	4,25%

Napomena :

NEOPOREZIVE KOLIČINE čine izvezene količine, količine otpremljene iz trošarinskog skladišta u drugo trošarinsko skladište unutar RH, za opskrbu brodova i zrakoplova u međunarodnom prometu, za službene potrebe diplomatskih i međunarodne org., porezno priznati gubitci, uzorci za probnu proizvodnju, za kontrolu kvalitete i uništeni pod carinskim nadzorom; denaturirani alkohol



Izvor podataka: Informacijski sustav Carinske uprave (na dan 8.2.2016.)